

WILLIAM | WRIGHT

Commercial Real Estate Services

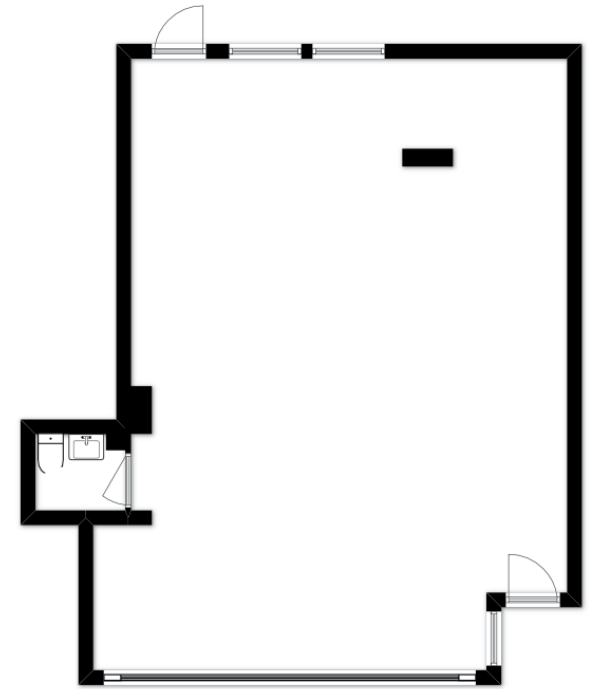
1935 W BROADWAY
KITSILANO, VANCOUVER, B.C

FOR LEASE



- FANTASTIC STREET FRONT EXPOSURE
- LOTS OF NATURAL LIGHT
- HIGH FOOT TRAFFIC
- EASILY ACCESSIBLE BY TRANSIT

FOR MORE INFORMATION CONTACT
RODERICK MACKAY / roderick@williamwright.ca
604.428.5255



THE DETAILS

SIZE
+/- 870 SQFT

PARKING
Ample parking behind building

PRIVATE WASHROOM
1

ZONING
C-3A

BASIC RENT
\$32.00/foot

ADDITIONAL RENT
\$22.00/foot

OVERVIEW

1935 W Broadway is centrally located between Arbutus and Burrard and is well-suited for a wide variety of both retail and office uses. It is currently vacant and ready for a new tenant to move in. This unit offers excellent street front exposure along West Broadway, one

of Vancouver's main arteries. The 870 square foot unit features floor to ceiling windows and a skylight allowing for ample natural light throughout the unit. There is a rear entrance with a balcony as well as ample parking available in the alleyway parking lot.

LOCATION

The subject property is a short walk to both shopping and restaurants along Broadway, Arbutus and Burrard Street. Broadway is one of Vancouver's busiest corridor's with multiple bus routes running every few minutes. Only a few minutes drive to Downtown Vancouver and easy access to UBC.



FOR MORE INFORMATION CONTACT

RODERICK MACKAY / roderick@williamwright.ca
604.428.5255